



Leveling the Playing Field for Investors: Interactive Brokers Integrates New Constructs Research

As of December 6th, clients of Interactive Brokers have access to New Constructs reports and ratings on over 10,000 stocks, mutual funds, and exchange-traded funds (ETFs) directly from their IBKR accounts. Contact [IBKR support](#) with questions.

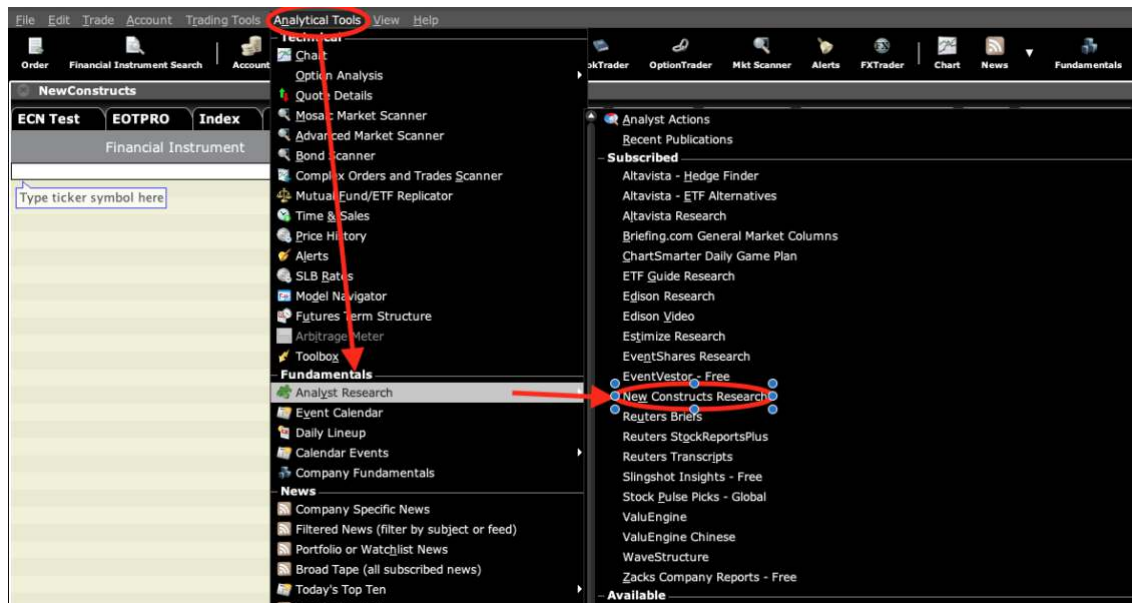
New Constructs provides Interactive Brokers clients with the sophisticated fundamental research that Wall Street insiders use. This [Ernst & Young white paper](#) shows the material superiority of our data and research.

Interactive Brokers enables their clients to make more informed decisions with New Constructs research, which leverages proprietary [Robo-Analyst technology](#), featured by [Harvard Business School](#), to scale expert analysis with machine learning. The average investor no longer has to settle for the often incomplete and conflicted research from traditional providers.

Elite [money managers, advisors and institutions](#) have relied on New Constructs for years to lower risk and improve performance. We are proud to extend our uniquely diligent research to over half a million self-directed investors in the Interactive Brokers community. We believe that every investor deserves access to comprehensive fundamental research like ours.

Here's where our research appears on the Interactive Brokers website:

- Classic TWS





- Mosaic

The screenshot displays the Mosaic trading platform interface. On the left, a sidebar menu is visible with the following categories and items:

- Trade**
 - Order Entry
 - Portfolio
 - Order Management
 - Strategy Builder
 - Portfolio Builder
 - IBot - type to trade
- Quotes**
 - Watchlist
 - Market Depth (Level II)
 - Time & Sales
 - Price History
 - Option Chain
 - Quote Details
 - FX Matrix
 - SLB Rates
- Technical Analytics**
 - Stock/ETF Benchmark
 - Mosaic Market Scanner
 - Advanced Market Scanner
 - Bond Scanner
 - Complex Orders and Trades Scanner
 - Mutual Fund/ETF Replicator
 - Chart
 - Option Analysis
 - Volatility Lab
 - Alerts
 - Portfolio Performance Profile
 - PortfolioAnalyst (VAR, Sharps, etc.)
 - WSH Corporate Event Calendar
 - Toolbox
- Information System**
 - Trader's Journal
 - Event Calendar
 - Daily Lineup
 - Calendar Events
 - Fundamentals
 - News
 - Analyst Research**
 - Templates
- Advanced Trading Tools**
 - BasketTrader
 - BookTrader
 - Classic TWS
 - Risk Navigator
 - More Advanced Tools

The right pane shows a list of publications under two categories:

- Subscribed**
 - Altavista - Hedge Finder
 - Altavista - ETF Alternatives
 - Altavista Research
 - Briefing.com General Market Columns
 - ChartSmarter Daily Game Plan
 - ETF Guide Research
 - Edison Research
 - Edison Video
 - Estimize Research
 - EventShares Research
 - EventVestor - Free
 - New Constructs Research**
 - Reuters Briefs
 - Reuters StockReportsPlus
 - Reuters Transcripts
 - Slingshot Insights - Free
 - Stock Pulse Picks - Global
 - ValuEngine
 - ValuEngine Chinese
 - WaveStructure
 - Zacks Company Reports - Free
- Available**
 - Accern
 - Alliance News
 - Argus Research
 - Asbury Research - Keys To This Week - US Stock Market and Weekly Wrap-Up
 - Asbury Research - Monthly Investment Compass
 - Bespoke Weather Active Trader
 - Bespoke Weather Basic
 - Bespoke Weather Premium
 - Bullseye Brief
 - Capitalise
 - CressCap
 - ENSO Borrow Rates
 - EOTPro Research
 - Econoday
 - Economatica
 - EventVestor Corporate Conference Calendars
 - EventVestor Corporate Events Calendars
 - EventVestor Event-Driven Alpha Alerts
 - Fingraphs.com
 - Gimmecredit Research
 - Guosen Chinese Research Complete
 - Guosen Chinese Research Lite
 - Hammerstone Markets Feed
 - Hammerstone Reports
 - Hedgeye Real-Time Alerts
 - Hintower Report - Daily Energy Comment

A red arrow points from the 'Analyst Research' item in the left sidebar to the 'New Constructs Research' item in the 'Subscribed' list on the right.



- Searching by ticker



Interactive Brokers added New Constructs research to their site to put more insight at clients' fingertips.

We are proud to extend our research offerings to self-directed investors. Comprehensive and unconflicted fundamental analysis need not be 100% of every investment decision, but it should not be 0%.

This article originally published on [December 7, 2018](#).

Disclosure: David Trainer, Kyle Guske II, and Sam McBride receive no compensation to write about any specific stock, style, or theme.

Follow us on [Twitter](#), [Facebook](#), [LinkedIn](#), and [StockTwits](#) for real-time alerts on all our research.



New Constructs® - Research to Fulfill the Fiduciary Duty of Care

Ratings & screeners on 3000 stocks, 450 ETFs and 7000 mutual funds help you make prudent investment decisions.

New Constructs leverages the latest in machine learning to analyze structured and unstructured financial data with unrivaled speed and accuracy. The firm's forensic accounting experts work alongside engineers to develop proprietary NLP libraries and financial models. Our investment ratings are based on the best fundamental data in the business for stocks, ETFs and mutual funds. Clients include many of the top hedge funds, mutual funds and wealth management firms. David Trainer, the firm's CEO, is regularly featured in the media as a thought leader on the fiduciary duty of care, earnings quality, valuation and investment strategy.

To fulfill the Duty of Care, research should be:

1. **Comprehensive** - All relevant publicly-available (e.g. 10-Ks and 10-Qs) information has been diligently reviewed, including footnotes and the management discussion & analysis (MD&A).
2. **Un-conflicted** - Clients deserve unbiased research.
3. **Transparent** - Advisors should be able to show how the analysis was performed and the data behind it.
4. **Relevant** - Empirical evidence must provide [tangible, quantifiable correlation](#) to stock, ETF or mutual fund performance.

Value Investing 2.0: Diligence Matters: Technology is Key to Value Investing With Scale

Accounting data is only the beginning of fundamental research. It must be translated into economic earnings to truly understand profitability and valuation. This translation requires deep analysis of footnotes and the MD&A, a process that our [robo-analyst technology](#) empowers us to perform for thousands of stocks, ETFs and mutual funds.



DISCLOSURES

New Constructs®, LLC (together with any subsidiaries and/or affiliates, "New Constructs") is an independent organization with no management ties to the companies it covers. None of the members of New Constructs' management team or the management team of any New Constructs' affiliate holds a seat on the Board of Directors of any of the companies New Constructs covers. New Constructs does not perform any investment or merchant banking functions and does not operate a trading desk.

New Constructs' Stock Ownership Policy prevents any of its employees or managers from engaging in Insider Trading and restricts any trading whereby an employee may exploit inside information regarding our stock research. In addition, employees and managers of the company are bound by a code of ethics that restricts them from purchasing or selling a security that they know or should have known was under consideration for inclusion in a New Constructs report nor may they purchase or sell a security for the first 15 days after New Constructs issues a report on that security.

DISCLAIMERS

The information and opinions presented in this report are provided to you for information purposes only and are not to be used or considered as an offer or solicitation of an offer to buy or sell securities or other financial instruments. New Constructs has not taken any steps to ensure that the securities referred to in this report are suitable for any particular investor and nothing in this report constitutes investment, legal, accounting or tax advice. This report includes general information that does not take into account your individual circumstance, financial situation or needs, nor does it represent a personal recommendation to you. The investments or services contained or referred to in this report may not be suitable for you and it is recommended that you consult an independent investment advisor if you are in doubt about any such investments or investment services.

Information and opinions presented in this report have been obtained or derived from sources believed by New Constructs to be reliable, but New Constructs makes no representation as to their accuracy, authority, usefulness, reliability, timeliness or completeness. New Constructs accepts no liability for loss arising from the use of the information presented in this report, and New Constructs makes no warranty as to results that may be obtained from the information presented in this report. Past performance should not be taken as an indication or guarantee of future performance, and no representation or warranty, express or implied, is made regarding future performance. Information and opinions contained in this report reflect a judgment at its original date of publication by New Constructs and are subject to change without notice. New Constructs may have issued, and may in the future issue, other reports that are inconsistent with, and reach different conclusions from, the information presented in this report. Those reports reflect the different assumptions, views and analytical methods of the analysts who prepared them and New Constructs is under no obligation to insure that such other reports are brought to the attention of any recipient of this report.

New Constructs' reports are intended for distribution to its professional and institutional investor customers. Recipients who are not professionals or institutional investor customers of New Constructs should seek the advice of their independent financial advisor prior to making any investment decision or for any necessary explanation of its contents.

This report is not directed to, or intended for distribution to or use by, any person or entity who is a citizen or resident of or located in any locality, state, country or jurisdiction where such distribution, publication, availability or use would be contrary to law or regulation or which would be subject New Constructs to any registration or licensing requirement within such jurisdiction.

This report may provide the addresses of websites. Except to the extent to which the report refers to New Constructs own website material, New Constructs has not reviewed the linked site and takes no responsibility for the content therein. Such address or hyperlink (including addresses or hyperlinks to New Constructs own website material) is provided solely for your convenience and the information and content of the linked site do not in any way form part of this report. Accessing such websites or following such hyperlink through this report shall be at your own risk.

All material in this report is the property of, and under copyright, of New Constructs. None of the contents, nor any copy of it, may be altered in any way, copied, or distributed or transmitted to any other party without the prior express written consent of New Constructs. All trademarks, service marks and logos used in this report are trademarks or service marks or registered trademarks or service marks of New Constructs. Copyright New Constructs, LLC 2003 through the present date. All rights reserved.